



May 2025

ROCK THE TRAILS

Newfoundland and Labrador Snowmobile Federation



Photo Credit: Scott Grant

Adapting to Change: A Look Back on the Season and Our Commitment to Year-Round Excellence

As another season comes to a close, we reflect on the challenges we faced with low snow levels and rising temperatures, which cut the season shorter than we had hoped—some areas barely had a season at all. Despite this, we remain dedicated to adapting and moving forward.



Tableland Snow Riders

While our winters may be changing, we are working harder than ever to ensure a top-tier, year-round experience for everyone. During the off-season, the NLSF and local clubs will continue to invest significant money, time and effort into trail work, ensuring that many of our trails are suitable for multi-use, so everyone can enjoy them throughout the year. With shorter winters, this has become increasingly important.

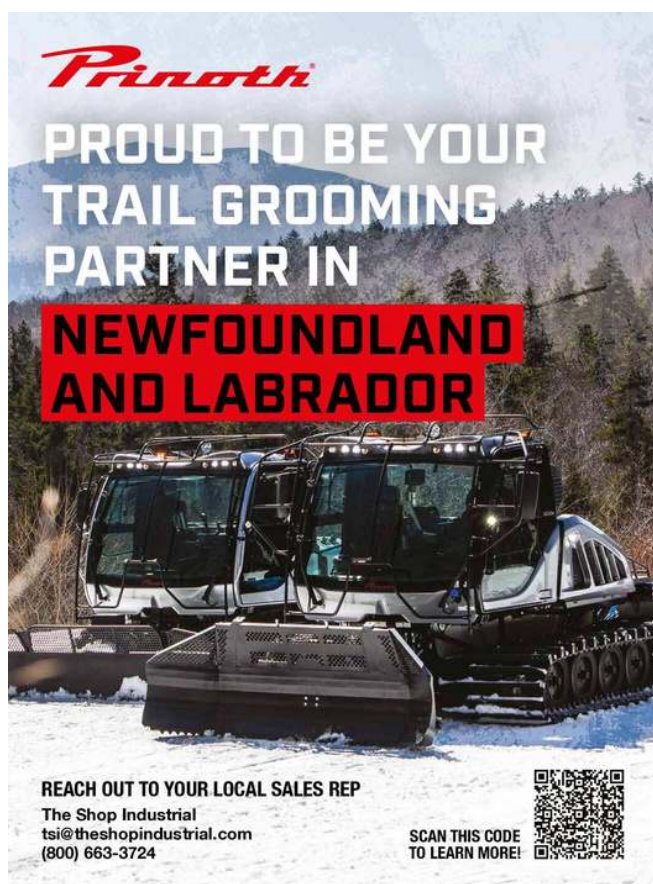
This season, we groomed approximately 3,300 hours, with the majority of that work taking place in the Western region. Even with lower-than-usual snow conditions, we've received a lot of positive feedback from riders about the exceptional trail conditions in the areas that did receive snow. Much of the hard work that makes this possible often goes unnoticed—everything from maintaining equipment to troubleshooting mechanical issues.

A special thank you goes out to our pass holders, vendors, clubs, and the countless volunteers whose dedication makes every season a success. We are especially proud of our groomer operators, who work tirelessly in challenging conditions—whether it's during a storm or late into the night. Their commitment to getting the groomers back on the trails as quickly as possible has made all the difference, and we truly appreciate their efforts.

Here's to more memories, more rides, and continued hard work in the seasons to come!

Off-Season Trail Work: Stay Updated and Safe

Off-season trail work is already in full swing! Follow your local club's Facebook page to stay informed about trail improvements and any potential hazards. Our clubs are working hard to enhance the trails, ensuring an even better experience for everyone.




Pinoth

**PROUD TO BE YOUR
TRAIL GROOMING
PARTNER IN
NEWFOUNDLAND
AND LABRADOR**

REACH OUT TO YOUR LOCAL SALES REP
The Shop Industrial
tsi@theshopindustrial.com
(800) 663-3724

SCAN THIS CODE
TO LEARN MORE!



Discovery Trails Snowmobile Association

Significant Investment Announced for Trail Development

During our Presidents Meeting on April 12, the Newfoundland and Labrador Snowmobile Federation (NLSF) announced a significant \$200,000 investment into trail development and enhancements set to take place this summer. This funding will be distributed among snowmobile clubs across the island, based on regional trail pass sales and the geographic area each club covers. An additional \$30,000 will be allocated specifically for bridge materials.

Through community fundraising efforts and the continued sale of local trail enhancement stickers, many clubs typically match or even exceed the funds provided by the NLSF. This means that the total investment in trail upgrades this summer could exceed \$500,000, marking a substantial boost to the province's trail system.

We are also committed to strengthening our partnership with the Newfoundland T'Railway Council to further develop the T'Railway system across the province.

A Strategic Approach to Trail Enhancement

This season's investments are part of a strategic approach to trail improvement, aiming to deliver long-term value for all trail users. Each club is working to clearly define its goals, with a focus on increasing recreational opportunities, promoting tourism, and improving accessibility. Assessments of existing trails are underway to determine their current condition, usage, and areas most in need of improvement, with attention given to safety, signage, and available amenities.

Stakeholder engagement is also a key part of the process involving the input of all clubs, community members, local municipalities, and

trail users. This ensures that upgrades reflect the needs of snowmobilers, ATV riders, and everyone else who uses our trail network. Priority projects are being identified based on usage patterns, environmental sensitivity, and potential economic benefits to surrounding communities.

Building a Safer, More Accessible, and Sustainable Trail Network

We will incorporate sustainable practices into trail design and construction to allow accessibility and early grooming during shortened winter seasons with low snow coverage. Making trails accessible to riders of all ages and abilities is also a priority, by incorporating features such as smoother surfaces, gradual slopes, safe bridges, and accessible amenities like rest areas, tourism hotspots, accommodations, restaurants, and gas stations.

Safety remains at the forefront, with improvements aimed at enhancing signage, maintaining trail surfaces, and ensuring designated crossings are clearly marked. In addition, year-round trail access means an ongoing commitment to maintenance and monitoring. Regular inspections, vegetation control, and repairs will help keep the trails safe, functional, and enjoyable throughout the seasons. With this major investment and collaborative effort, the NLSF and its member clubs are setting the stage for a more connected, accessible, and sustainable trail system. The improvements made this summer will not only enhance the rider experience but also support community development and environmental stewardship across the province.



A Pillar of the NLSF: Celebrating Muriel's 20 Years of Dedication

On April 25, we celebrated a major milestone—Muriel, our dedicated Office/Accounting Manager, has been with the NLSF for 20 years!

Muriel has been a steady force behind the scenes, ensuring the books are balanced, the bills are paid, and employees are taken care of. She's always ready to lend a helping hand and is the glue that holds the office together, keeping everything running smoothly and everyone on track.

In the office, we lovingly call her Murm!—usually shouted several times a day. Why? Because she's our unofficial historian and expert problem-solver. If something needs remembering from the early 2000's... Murm!! She's not only a key part of our history but a cornerstone of our daily success.

Over the past two decades, she's seen it all—from our very first groomer to the thriving operation we've become. Through every change and challenge, Muriel has helped shape the NLSF into what it is today.

Please join us in congratulating Muriel on 20 amazing years with the NLSF. Thank you, for everything you do!





TRACKING INC

WWW.TRACKINC.COM

Arctic Transportation & Snow Grooming Solutions

Experience our equipment firsthand!

Contact us

for demos & event support!



Partnering with SNB in support of snowmobiling throughout New Brunswick.



Tucker
SNO-CAT



MOGUL Master
MULTI-BLADE PLANERS



SNOW
RABBIT X

(819) 300-2586



INFO@TRACKINC.COM

Thank You for the Ride – A Message from NLSF Chair, Bob Blundon

I would like to sincerely thank all the volunteers involved with the 17 clubs across the island for their dedication and hard work. Your efforts have been essential in making everything we do such a great success. Over the past number of years, I've had the pleasure of enjoying the trails—whether by snowmobile or ATV—in every area, and every club has a lot to be proud of.

I also want to thank all the trail pass holders for their continued support. I hope everyone enjoyed the trails throughout the past season. Let's keep the faith—Mother Nature will eventually turn things around, and we can look forward to the return of snowy and successful winters.

2025 Season Trail Pass Update: Vendor Submissions, Sales Trends and Our Continued Commitment to the Snowmobiling Community

Our vendors are currently working on submitting their packages, and once all are in, we'll have a clearer picture of this season's numbers. Early reports suggest that sales are down compared to previous seasons. While many factors can influence pass sales, weather has certainly played a significant role.

We remain committed to providing the best possible product for our snowmobiling community, and we truly appreciate the ongoing support from everyone involved.

In the meantime, I hope many of you are looking forward to a sunny and enjoyable ATV season. It's fantastic to be able to offer not only an excellent winter product but a fantastic trail system built to an ATV standard that lets us enjoy Newfoundland's great outdoors year-round.

It has been an honor to serve as the NLSF Chair for over 10 years however this will be my final term in the role as I will not be seeking re-election during our AGM this October, and I'm proud of all we've achieved together. I believe the NLSF will continue to grow and deliver some of the finest groomed trails in the country—trails that can be enjoyed by everyone in every season.

As I step into my new role as Vice President with the Canadian Council of Snowmobile Organizations, I look forward to continuing to support and advance the sport we all love, both across Canada and internationally.



Bob Blundon, NLSF Chair

DRIVEN BY DEDICATION: ELVIS NEWBURY WINS NATIONAL AWARD OF EXCELLENCE FOR GROOMER OPERATOR

If you've ever hit the trails in the Green Bay area, chances are you've ridden on paths groomed and cared for by one of the most dedicated members of the snowmobiling community—Elvis.

A member of the Green Bay Snowmobile Association (GBSA) since the late '90s, Elvis isn't just part of the club—he is the club's heartbeat. As the operator to unload the Association's very first groomer to logging over 300 hours each season maintaining 205 kilometers of trail, his journey with the club has been nothing short of legendary. While he now holds a paid groomer operator position, Elvis began as a volunteer and still devotes countless unpaid hours to GBSA. As Grooming Coordinator and board member of the club, his role spans far beyond grooming—he leads shelter upgrades, trail projects, and fundraising efforts.

Continued On Page 7



THE SHOP INDUSTRIAL INC.

112 FIELDING ROAD, LIVELY, ON P3Y 1L5

1-800-663-3724

www.theshopindustrial.com

tsi@theshopindustrial.com

The Shop Industrial Inc. manufacturer of **MOGUL Master**
"The Grooming Professionals"



Pinot

MOGUL Master

This past year alone, Elvis organized a Poker Run fundraiser and the "12 Days of Christmas" block draw, raising critical funds for trail upkeep and warm-up shelters. He volunteers his time well beyond what's expected, tackling heavy-duty trail work such as culvert replacements, brush cutting, ditch work, and even removing large rocks that could damage grooming equipment. He repairs and maintains his own equipment—often working late into the night and braving all kinds of weather.

What truly sets Elvis apart? His leadership, dedication, positive attitude, and the pride he takes in keeping trails safe and pristine. He promotes snowmobiling safety, ensures clear trail markings and keeps the public informed every step of the way. He consistently attends Groomer Meetings and AGMs hosted by the NLSF, inspiring other operators across the province with his tireless work ethic and passion for snowmobiling.

Elvis is more than a groomer operator—he's a community builder, safety advocate, and snowmobiling ambassador. For riders across the

Green Bay area, he's the reason your ride is smooth, safe, and unforgettable.

Congratulations, Elvis, on receiving the Canadian Council of Snowmobile Organizations (CCSO) National Award of Excellence—you are an invaluable asset and your dedication keeps our trails alive and the snowmobiling community thriving.



Stay away...
SEE THE WIRES.

Electricity is everywhere you go, even if you're off the beaten path. Look for hazards that can be harder to see in winter conditions. Be cautious of guy wires and avoid power line rights-of-way.
newfoundlandpower.com/safety | 1-800-663-2802

WHENEVER. WHEREVER.
We'll be there.

NEWFOUNDLAND POWER
A FORTIS COMPANY



Your Trail Pass at Work: Making a Difference Every Ride

Every trail pass you purchase directly contributes to the safety and maintenance of our trails. Here's a quick recap of how your trail pass dollars were put to good use over the past year:

Signage

A safe ride starts with clear directions. This year, the NLSF invested \$7,200 in signage—everything from safety markers to directional signs—making sure you stay on track. When you see those signs, remember it's your support that makes them possible!

Grading

Smooth trails are rideable trails. With your support, we invested over \$74,000 in grading operations that prepare the trails for grooming, allowing us to start earlier with less snow. A smoother surface means a better experience for everyone!

Bridge Repairs

From small crossings to large spans, your trail pass helps keep our bridges safe. We invested more than \$60,000 into bridge repairs, ensuring safe crossings for snowmobiles and ATVs over rivers and streams.



IRVING
BIG STOP
Restaurant

Warm up with a
homestyle meal on any
trail you travel



Stop by any of our locations:
Clarendville | Deer Lake | Gander | Goobies | Donovan's (Mount Pearl)

irvingoil.com   



GO!

Brush Cutting

Overgrown trails are unsafe trails. This year, we spent \$37,000 clearing vegetation, and our excavator with a mulching head has been working hard to widen and improve many of our trails across the island.

Culverts

Heavy rain and spring thaw can be tough on our trails. Thanks to your contributions, we invested over \$35,000 in culvert installations and washout repairs, preventing erosion and keeping the trails safe and smooth.

Warm-Up Shelters

During a ride, there's nothing better than a cozy place to warm up, recharge and enjoy a snack before hitting the trails again. Thanks to your trail pass, the NLSF contributed \$21,000 worth of materials over the past year to help clubs build and upgrade warm-up shelters across the island.

Grooming Expenses

Grooming is key to keeping trails in great shape, but it doesn't come cheap. Even though it was a short season, the NLSF spent nearly \$290,000 on grooming, with fuel being one of the largest expenses. Your trail pass also helps cover the cost of maintaining the groomers—from parts to repairs, ensuring they're always in top condition and ready to roll.

In total, the NLSF invested more than \$524,000 into trail improvements and maintenance this past year. That's over half a million dollars—all made possible because of you. Thank you for helping us keep the adventure going strong, year after year.



Newfoundland and Labrador Hydro reminds you to please

Make Every Ride A Safe Ride



- Ensure your snowmobile is working properly.
- Avoid riding along power lines and watch for guy wires.
- Steer clear of high snow banks around overhanging power lines.
- Proceed slowly near utility workers, vehicles or equipment.
- Stay off the ice, including reservoirs and rivers near hydroelectric dams where ice is unstable.

   nlhydro.com



newfoundland labrador

hydro



INTERNATIONAL VOLUNTEER WEEK

Celebrating Volunteers During International Volunteer Week April 27 - May 3

There's a powerful quote by Sherry Anderson that perfectly captures the spirit of our volunteers: "Volunteers don't get paid, not because they're worthless, but because they're priceless." Whether you're a seasoned volunteer or new to the club, your involvement is essential to the success of the snowmobiling community in Newfoundland. Volunteers like you are the driving force behind the smooth operation of our entire snowmobiling system.

To show our appreciation, we've asked Club Presidents in each area to put forward a volunteer who goes above and beyond in their community—often without seeking recognition. These are the quiet champions who make a big difference, and we want to celebrate them! Selected nominees will receive a Tim Hortons gift card and some NLSF swag as a small token of our thanks.





Bay St. George Snowmobile Association



Bay St. George Snowmobile Association



Green Bay Snowmobile Club



Exploits Trailnet



Western Sno-Riders



Gander and Area Snowmobile Club

*“Volunteers don’t get paid, not because they’re worthless, but because they’re priceless.”
-Sherry Anderson*



Western Sno-Riders



Western Sno-Riders



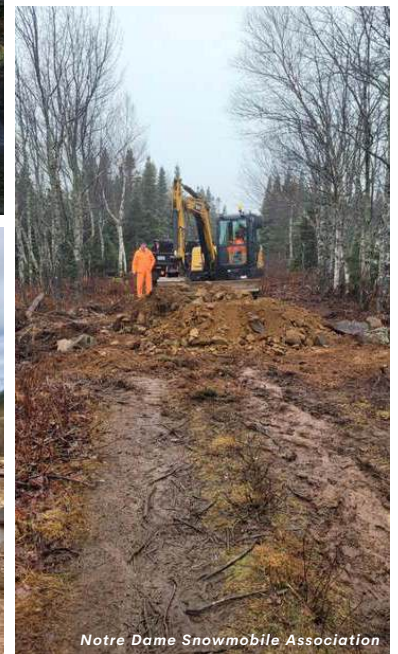
Kittiwake Snowmobile Association



Discovery Trails Snowmobile Association



Junction Trail Blazers



Notre Dame Snowmobile Association



WESTERN SNO-RIDERS

RECEIVES YAMAHA STAY OUTDOORS GRANT

We are excited to congratulate the Western Sno-Riders (WSR) on receiving the Yamaha Stay Outdoors Grant for the second consecutive year! This program is dedicated to supporting conservation, education, access, and sustainable use initiatives for not-for-profit riding organizations across Canada.

Glenn Green, President of the WSR, shared some inspiring plans during a recent interview. The club is focused on making their shelters more accessible and enjoyable for everyone, especially individuals with mobility challenges, seniors, and others who benefit from additional support. Their plans include expanding and enhancing three key shelters along their trail system with features like access ramps, motion sensor lighting, and

handrails. These upgrades will ensure that all trail users can enjoy a safe and comfortable experience, no matter their ability.

"WSR is excited to improve the rider experience for our local members or anyone visiting our area...winter or summer. Everyone will now have ease of access to enjoy our three shelters with their families. We are so happy Yamaha Financial Services made this idea a reality with their Stay Outdoors Grant Program," said Green.

This initiative is a big win for the community, and we can't wait to see the positive impact these improvements will have for all snowmobilers! Keep an eye out for updates on their progress.

Thank you to our
"Friends of Snowmobiling"
for your continued support



WM. Perry Trucking
Deer Lake, NL
709-636-1650
709-635-2506



Newfoundland & Labrador Snowmobile Federation
7 Wellon Drive
Deer Lake, NL A8A 2G6
1 (709) 635-4395

info@nlsf.org | f